

# Tree Checklist

Can you spot them all?

1



## Western Hemlock

Look for: short & flat needles, cones under 3cm long.

2



## Mountain Hemlock

Look for: a slightly droopy top, <30m tall, located in subalpine.

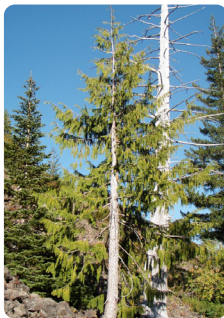
3



## Amabilis Fir

Look for: a tall, straight tree with a dense cone shaped crown.

4



## Yellow Cedar

Look for: branches that spread out and droop, dark-green to yellow-green in colour.

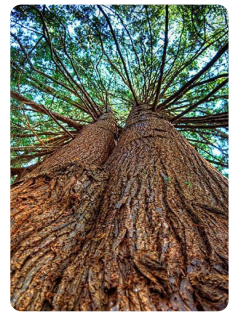
5



## Western White Pine

Look for: height up to 60m, short crown, long cones 10-25cm long.

6



## Western Redcedar

Look for: height up to 60m, small 1cm cones, reddish-brown bark.